



LIPOLIGHT

For you
to be on the fat dissolve circuit
to healthy beauty

LIPO LIGHT

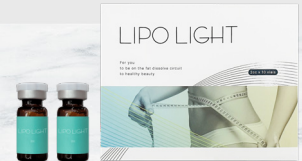


No Pain, Swelling, and Bruising.

Formation of flawless facial lines and beautiful contours.

Elimination of excess fat and controlled formation of new fat cells.

5 minutes of short treatment duration and no bruising & no pain.



LIPO LIGHT

The necessity of contour solutions

Sagging of face

To be out of proportion due to the aging process and reducing dermal elasticity as time goes on.

This contour solution is helpful to regain the golden ratio.
Because it can be used on the selective spot or area wanted
in necessary time.



LIPO LIGHT

For you
to be on the fat dissolve circuit
to healthy beauty

LIPO LIGHT

Features

LIPO LIGHT softens the hardened fat cells and enhances fat burning as well as weight loss when incorporated with cardiovascular exercises.

LIPO LIGHT can be administered on nose areas to enhance facial contours, resulting in lipo-sculpting.

It can be applied to remove excess fat cells after lipo-implants and lipo-injections in the areas of cheekbones, cheeks, earlobes, and chins.



It is the ideal product that is quick and immediate. Each administration is completed in 5 minutes and is free of pain and bruising.

LIPO LIGHT is proven effective in preventing synthesis of excess fat cells, delivering immediate visible effects.

LIPO LIGHT

Before & After



'LIPO LIGHT' helps for

V-line

Small face

Balanced facial line

Sagging chin-line and double-chin

Flawless facial line

No visible results from Botox application

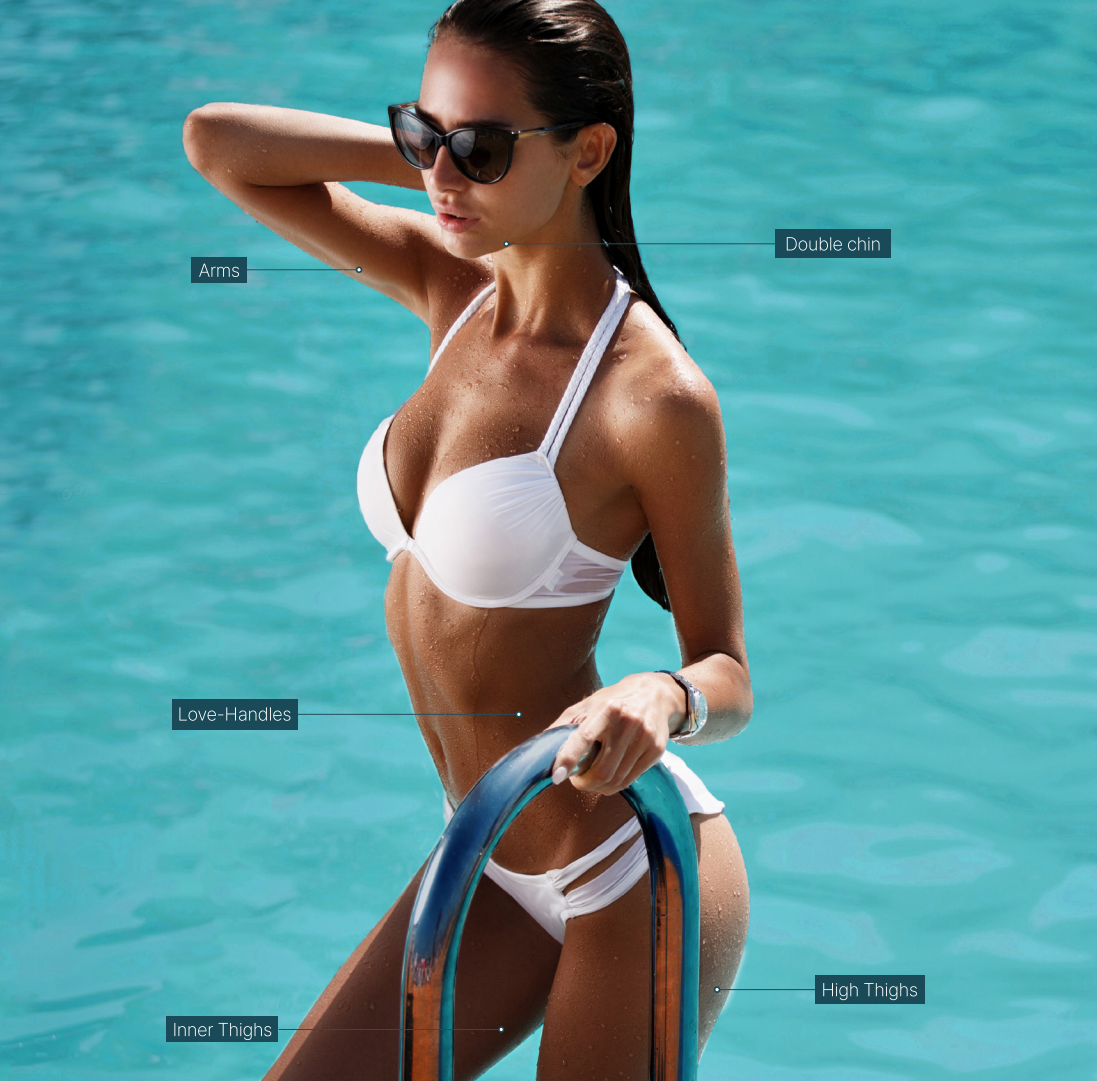
Aftercare for excessive fat-implant

Slim waistline & leg line

LIPO LIGHT

How to use

1. Usage per each spot is 0.1cc.
2. Do not exceed 2cc at once.
3. requires 1~2 weeks between each treatment.
4. After using, massage well on the spot.
5. In case of using at the body, the usage per part is same.
6. Recommended to use along the chin line.
7. In case of the body, there are various kinds of fat and size, so its efficacies can't be sure.
8. In some cases, allergy reaction may appear by an individual difference after use. Against this case, prescribe antibiotics (ex. Dexamethasone).
9. Caused by overdosage on cheek, top side of nose etc., the dimple symptom may occur, so use carefully according to skill of operator.



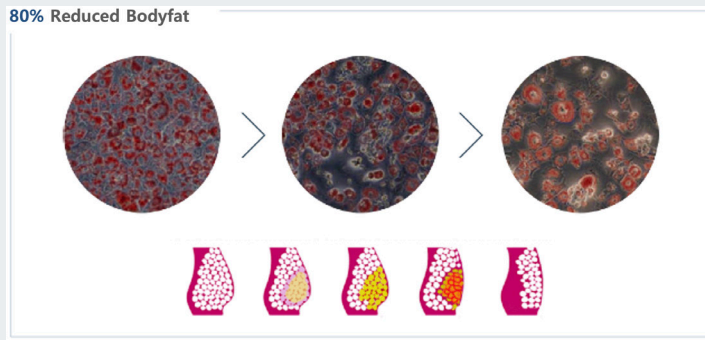
LIPO LIGHT

Clinical Data

'LIPO LIGHT' is

clinically proven safer and far more effective than competitors.
It is engineered and designed to selectively target excess fat cells and block synthesis of new fat cells.
Immediate visible results are guaranteed.

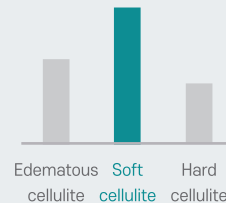
Illustrating isolated fat cells from human stem cells and Lipo-Sculpting Solution of LIPO LIGHT



Edematous Cellulite Reduction Rate 29~32%

Soft Cellulite Reduction Rate 45~50%

Hard Cellulite Reduction Rate 18~22%



Compared to its competitors, LIPO LIGHT Solution shows the greatest 45~50% cellulite reduction percentage.

LIPO LIGHT

For you
to be on the fat dissolve circuit
to healthy beauty

Main Ingredients



Deoxycholic Acid

■ Fat cell removal

Sodium Chloride

Improves blood flow

Crimson Flowers

Protection of skin
damage

Pulsatilla Extract

Increased skin
elasticity

Maroni Extract

Increased capillary
vessel activities

Walnut Extract

eliminating of
toxic wastes

Bladderwrack

cellulite-removing
effective

Papaya Extract

dissolving keratins



LIPO LIGHT